

**COUNTY OF LOS ANGELES – DEPARTMENT OF MENTAL HEALTH  
PROGRAM SUPPORT BUREAU – MHSA IMPLEMENTATION AND OUTCOMES DIVISION**



WELLNESS • RECOVERY • RESILIENCE

**Prevention & Early Intervention: Seeking Safety  
Countywide Aggregate Practice Outcomes Dashboard Report  
Outcome Data Submission April 24, 2013**

**Participating Legal Entities Include:**

Alcott Center for Mental Health Services	Hillview Mental Health Center Inc.	Telecare Corporation
Asian American Drug Abuse Program	Intercommunity Child Guidance Center	Tessie Cleveland Community Services
Associated League of Mexican Americans	Jewish Family Service of LA	The Guidance Center
Aviva Center	Leroy Haynes Foundation Inc.	The Help Group Child and Family Center
BRIDGES Inc.	Los Angeles Child Guidance	Tobinworld
Child and Family Center	Mental Health America of LA	Trinity Youth Services
Childreach	Optimist Youth Homes	Vista Del Mar Child and Family Services
Children’s Hospital of Los Angeles	Pacific Asian Counseling Services	<b>L.A. COUNTY DMH:</b>
Community Counseling Services	Pacific Clinics	American Indian Counseling Center
Counseling and Research Assc Inc.	Pacific Lodge Youth Services	Arcadia MHS
Crittenton Services for Child and Family	Pasadena Unified School District	Coastal API Family MHC
D Veal Family and Youth Services	Penny Lane Centers	Compton Family MHS
David and Margaret Home Inc.	Phoenix House of Los Angeles, Inc.	Downtown MHC
Didi Hirsch Psychiatric Services	Rosemary Children’s Services	Edmund D. Edelman Westside MHC
Eisner Pediatric Family Center	San Fernando Valley Child Guidance	Harbor-UCLA Medical Center
		Juvenile Justice Transition Aftercare Services
El Centro De Amistad, Inc.	San Fernando Valley Community MHC	Long Beach API Family MHC
El Centro Del Pueblo Inc.	San Gabriel Children’s Center Inc.	Long Beach Child & Adolescent Clinic
Enki Health and Research Systems, Inc.	SHIELDS For Families	Long Beach MHS Adult Clinic
Ettie Lee Homes, Inc.	South Central Health and Rehab Program	Northeast MHC
Exceptional Children’s Foundation	Special Service For Groups	Rio Hondo Community MHC
Five Acres	SPIRITT Family Services	San Pedro MHS
Foothill Family Services	St. Joseph Center	South Bay MHS
Hathaway Sycamores Child Family Services	St. Johns Hospital Child Study Center	West Central Family MHS
Hillsides	Tarzana Treatment Centers Inc.	

**Agencies submitting outcomes that are not approved to provide Seeking Safety by PEI Administration:**

Mckinley Children's Center	<b>L.A. COUNTY DMH:</b>
Venice Family Clinic	Antelope Valley MHC
	Hollywood MHC

Table 1. Seeking Safety Status since inception to April 24, 2013					
# of Clients Claimed to Practice	# of Clients entered into PEI OMA	# of Tx cycles in PEI OMA	Clients with Multiple Tx Cycles	Clients Completing Tx	Clients Dropping-Out of Tx
14126	36.37%	5366	4.28%	16.51%	26.26%
n=	5137	n=	220	886	1409

Note 1: Clients Claimed was based on Seeking Safety being selected as the EBP in a PEI Plan and having  $\geq 1$  core services claimed to the practice.

Note 2: Number of clients Completing Tx or Dropping-Out of Tx was determined by whether the EBP was said to be completed (e.g. answered "yes" or "no") in the PEI OMA.

Table 2. Client Demographics - Clients Who Entered Seeking Safety												
Total Number of Clients	Age	Gender			Ethnicity					Primary Language		
	Average	Female	Male	Unknown	African-American	Asian / Pacific Islander	Caucasian	Hispanic / Latino	Other	English	Spanish	Other
	5137	22	47.63%	52.31%	0.06%	21.57%	2.94%	11.91%	58.56%	5.02%	75.98%	20.63%
n=		2447	2687	3	1108	151	612	3008	258	3903	1060	174

Note1: Age is calculated at the date of the first EBP.

Note2: Percentages may not total 100 due to missing data and/or rounding.

Note3: 35 Clients have multiple tx cycles where they aged up which causes the counts on age group to add up to more than the distinct client count for the practice

Table 3: Top 5 Most Frequently Reported DSM-IV Primary Axis Diagnosis - Clients Who Entered Seeking Safety						
Total Treatment Cycles	Depressive Disorder NOS	Mood Disorder NOS	Oppositional Defiant Disorder	Post-Traumatic Stress Disorder	Disruptive Behavior Disorder NOS	Other
5366	10.38%	8.98%	8.78%	8.16%	6.71%	56.99%
n=	557	482	471	438	360	3058

\*See breakout of "Other" on the supplemental information page.

Table 4: Program Process Data - Clients Who Entered Seeking Safety			
Outcome Measures Administered	Pre-Test with Scores	Post-test with Scores	Clients Who Completed both a Pre and Post Measure with Scores
UCLA PTSD-RI - Parent	35.91%	17.07%	4.79%
	n= 1208	251	161
	Ackn= 3364	1470	3364
UCLA PTSD-RI - Child / Adolescent	64.29%	31.10%	9.82%
	n= 2369	492	362
	Ackn= 3685	1582	3685
UCLA PTSD-RI - Adult	65.41%	30.42%	6.55%
	n= 749	94	75
	Ackn= 1145	309	1145
Youth Outcome Questionnaire - 2.01 (Parent)	47.53%	23.04%	6.81%
	n= 1549	320	222
	Ackn= 3259	1389	3259
Youth Outcome Questionnaire – Self Report – 2.0 (YOQ-SR)	74.46%	37.16%	11.89%
	n= 2650	554	423
	Ackn= 3559	1491	3559
Outcome Questionnaire – 45.2*	73.14%	38.59%	7.52%
	n= 1051	142	108
	Ackn= 1437	368	1437

Note 1: Number of acknowledged measures (Ackn=) is determined by the number of required measures that receive a score or an unable to collect reason code.

Note 2: The % indicated for Pre-test with scores, Post-test with scores, and both a Pre- and Post-test with scores is calculated by dividing the (n=#) by the number acknowledged (Ackn=#) in the PEI OMA system for each measure. The number acknowledged (Ackn=#) for those with Pre and Post scores is an estimate based on the greatest number of matches that could be expected given the number of Pre scores acknowledged.

Table 5a. Top Reasons Given for "Unable to Collect"								
UCLA PTSD-RI - Parent	Total Pre 2157		Parent/care provider unavailable	Administration date exceeds acceptable range	Outcome measure unavailable	Clinician not trained in outcome measure	Parent/care provider refused	Other Reasons
		percent	51.18%	14.84%	10.48%	9.83%	6.17%	7.51%
		n	1104	320	226	212	133	162
	Total Post 1219		Parent/care provider unavailable	Premature termination	Invalid outcome measure	Parent/care provider refused	Lost contact with parent/care provider	Other Reasons
		percent	46.92%	22.72%	8.20%	5.33%	5.25%	11.57%
		n	572	277	100	65	64	141

Table 5b. Top Reasons Given for "Unable to Collect"								
UCLA PTSD-RI - Child/Adolescent	Total Pre 1316		Administration date exceeds acceptable range	Client refused	Clinician not trained in outcome measure	Outcome measure unavailable	Client unavailable	Other Reasons
		percent	27.58%	19.15%	17.40%	16.79%	9.57%	9.50%
		n	363	252	229	221	126	125
	Total Post 1090		Premature termination	Client unavailable	Lost contact with client	Client refused	Invalid outcome measure	Other Reasons
		percent	30.00%	26.33%	10.73%	10.37%	9.17%	13.39%
		n	327	287	117	113	100	146

UCLA PTSD-RI - Adult	Total Pre 396		Not available in primary language	Outcome measure unavailable	Clinician not trained in outcome measure	Administration date exceeds acceptable range	Client refused	Other Reasons
		percent	33.84%	21.46%	14.39%	9.09%	9.09%	12.12%
		n	134	85	57	36	36	48
	Total Post 215		Lost contact with client	Client unavailable	Not available in primary language	Premature termination	Client refused	Other Reasons
		percent	28.84%	18.60%	16.74%	11.16%	10.70%	13.95%
		n	62	40	36	24	23	30

Youth Outcome Questionnaire - 2.01 (Parent)	Total Pre 1710		Parent/care provider unavailable	Administration date exceeds acceptable range	Clinician not trained in outcome measure	Outcome measure unavailable	Parent/care provider refused	Other Reasons
		percent	55.32%	19.24%	7.25%	7.25%	5.44%	5.50%
		n	946	329	124	124	93	94
	Total Post 1069		Parent/care provider unavailable	Premature termination	Lost contact with parent/care provider	Invalid outcome measure	Parent/care provider refused	Other Reasons
		percent	49.11%	25.44%	5.61%	5.52%	5.24%	9.07%
		n	525	272	60	59	56	97

Youth Outcome Questionnaire Self Report – 2.0 (YOQ-SR)	Total Pre 909		Administration date exceeds acceptable range	Client refused	Clinician not trained in outcome measure	Outcome measure unavailable	Client unavailable	Other Reasons
		percent	38.61%	18.59%	14.52%	13.64%	8.03%	6.60%
		n	351	169	132	124	73	60
	Total Post 937		Premature termination	Client unavailable	Lost contact with client	Client refused	Invalid outcome measure	Other Reasons
		percent	33.62%	27.53%	11.85%	8.75%	6.40%	11.85%
		n	315	258	111	82	60	111

Outcome Questionnaire – 45.2*	Total Pre 386		Outcome measure unavailable	Not available in primary language	Administration date exceeds acceptable range	Clinician not trained in outcome measure	Client refused	Other Reasons
		percent	31.35%	20.47%	14.51%	11.40%	7.77%	14.51%
		n	121	79	56	44	30	56
	Total Post 226		Lost contact with client	Client unavailable	Premature termination	Client refused	Outcome measure unavailable	Other Reasons
		percent	28.76%	23.45%	16.37%	9.29%	8.41%	13.72%
		n	65	53	37	21	19	31

Total Treatment Cycles 886	Average Length of Treatment in Weeks	Range of Treatment Weeks		Average Number of Sessions	Range of Sessions	
	30	Min 0	Max 115	38	Min 1	Max 334

<b>Table 7a. Outcome Data<sup>±</sup> – Clients who Completed Seeking Safety</b>					
		<b>Percent Improvement from Pre to Post</b>	<b>Percent of Clients Showing Reliable Change* from Pre- to Post-Seeking Safety</b>		
			<b>Positive Change</b>	<b>No change</b>	<b>Negative Change</b>
<b>UCLA PTSD-RI - Parent</b>	<b>TOTAL</b>	36.40% (n=99)	23.23%	73.74%	3.03%
			23	73	3
<b>UCLA PTSD-RI - Child/Adolescent</b>	<b>TOTAL</b>	28.53% (n=247)	23.48%	72.87%	3.64%
			58	180	9
<b>UCLA PTSD-RI - Adult</b>	<b>TOTAL</b>	20.39% (n=64)	25.00%	68.75%	6.25%
			16	44	4
<b>Youth Outcome Questionnaire (YOQ) - 2.01 (Parent)</b>	<b>TOTAL</b>	30.37% (n=141)	51.06%	36.88%	12.06%
			72	52	17
<b>Youth Outcome Questionnaire - Self Report - 2.0 (YOQ-SR)</b>	<b>TOTAL</b>	31.19% (n=310)	46.45%	44.19%	9.35%
			144	137	29
<b>Outcome Questionnaire – 45.2*</b>	<b>TOTAL</b>	19.40% (n=89)	41.57%	48.31%	10.11%
			37	43	9

<sup>±</sup>Please see Appendix A. for a description of the Seeking Safety outcome measures and the outcome indicators (percent improvement in average scores; and, percent of clients showing reliable change).

Note1: Possible PTSD-RI range from 0-68, with a clinical cutpoint of 38.

Note2: Possible YOQ Total Scores range from -16-240, with a clinical cutpoint of 46.

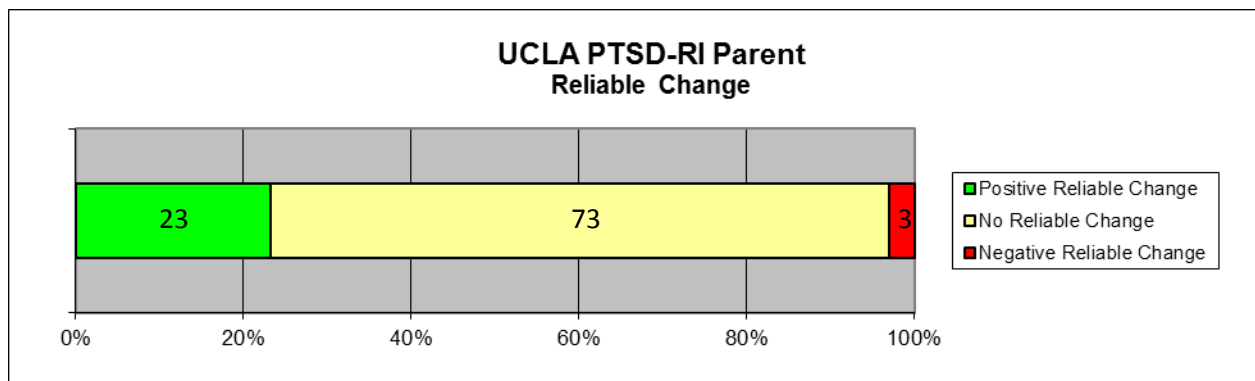
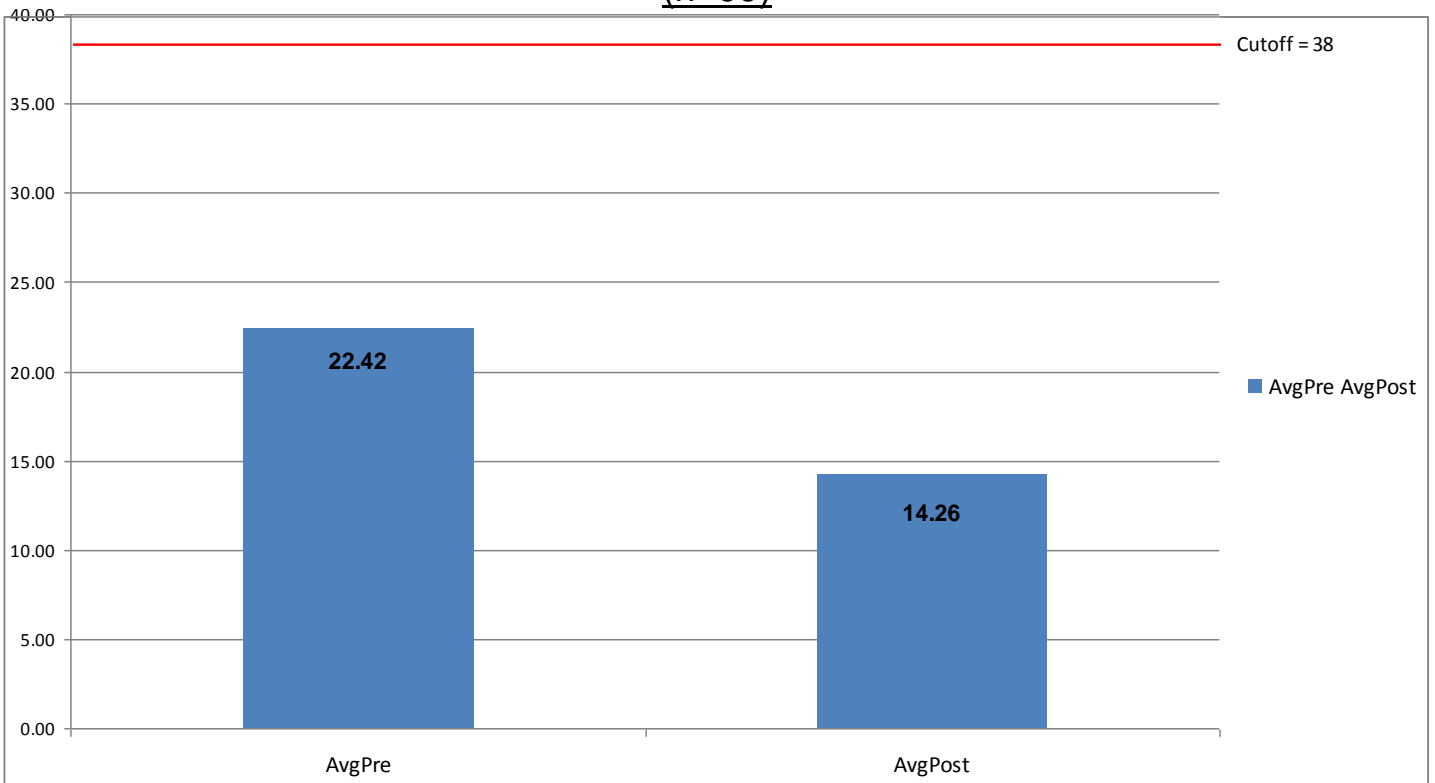
Note3: Possible YOQ-SR Total Scores range from -16-240, with a clinical cutpoint of 47.

Note4: Possible OQ Total Scores range from 0-180, with a clinical cutpoint of 63.

Note5: Unable to compute Reliable Change for the PTSD-RI Adult scale.

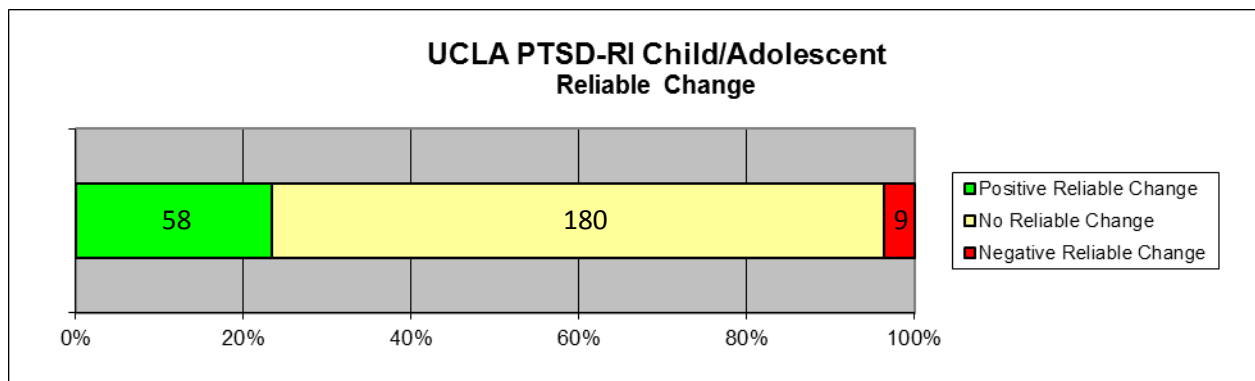
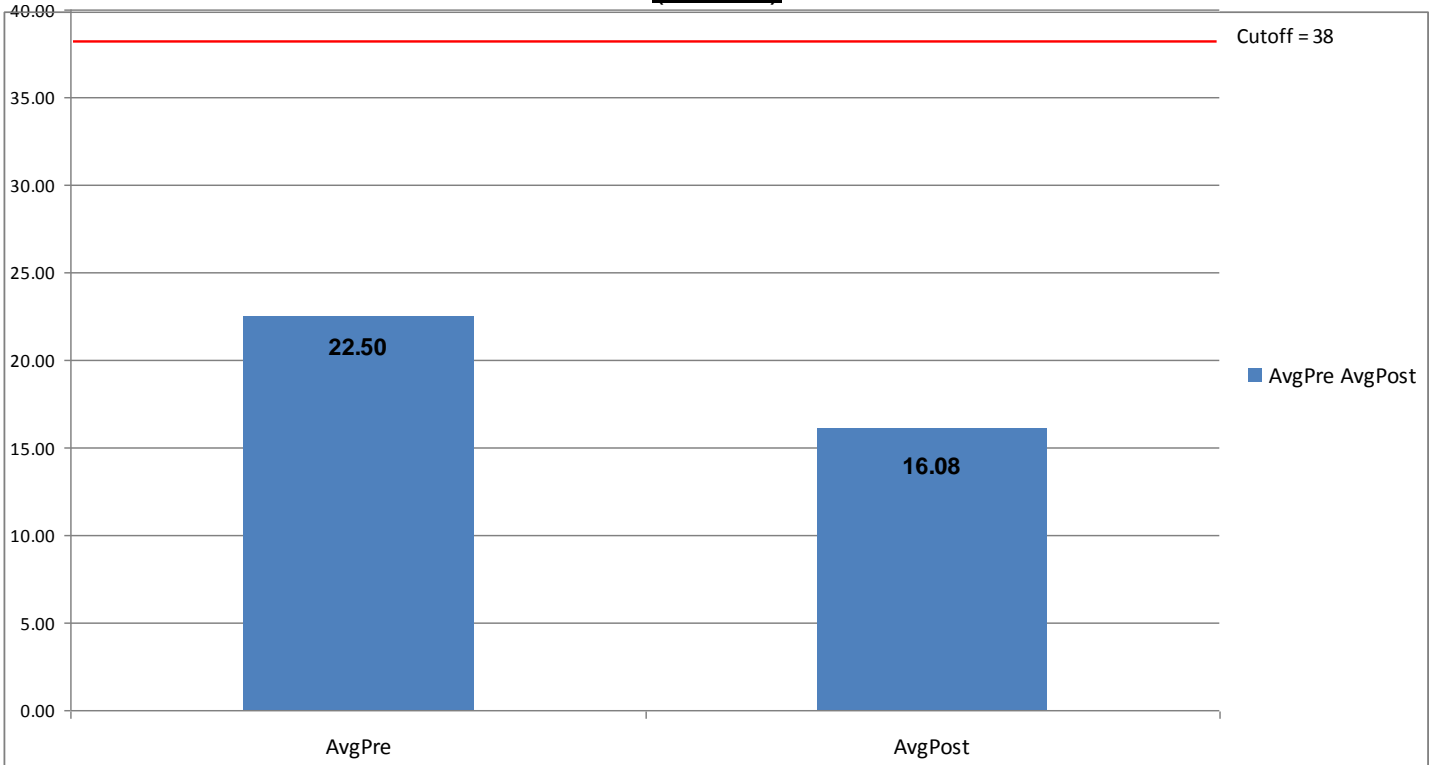
Note6: Positive Change indicates that the scores decreased from the pre to the post measures.

### UCLA PTSD RI – Parent (n=99)

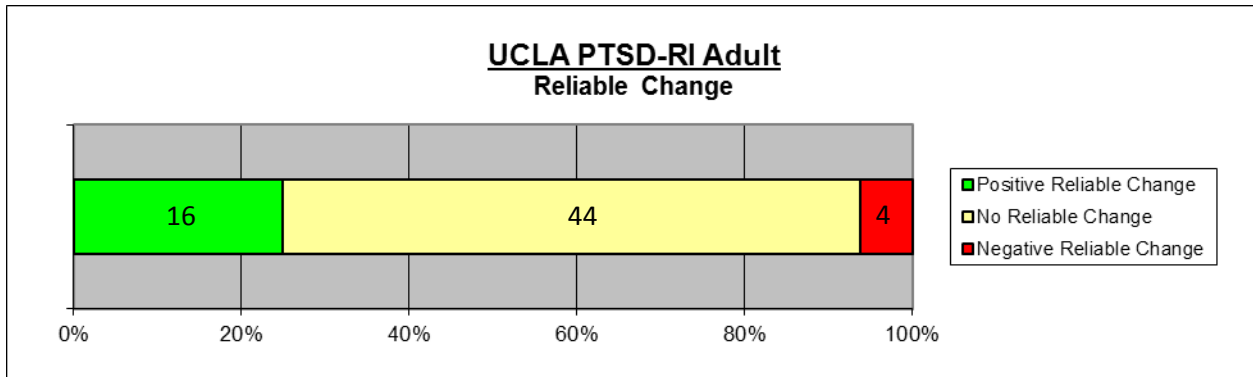
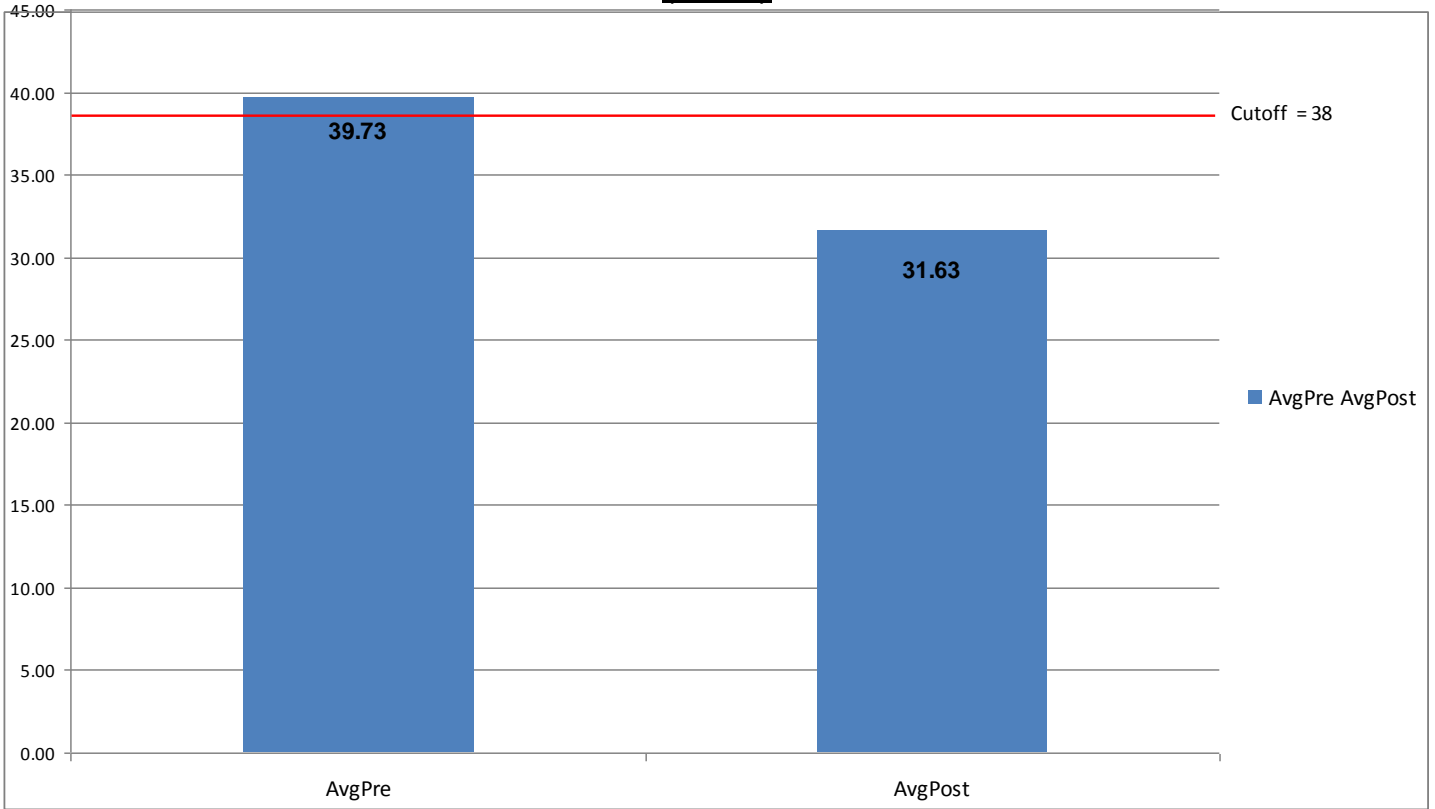




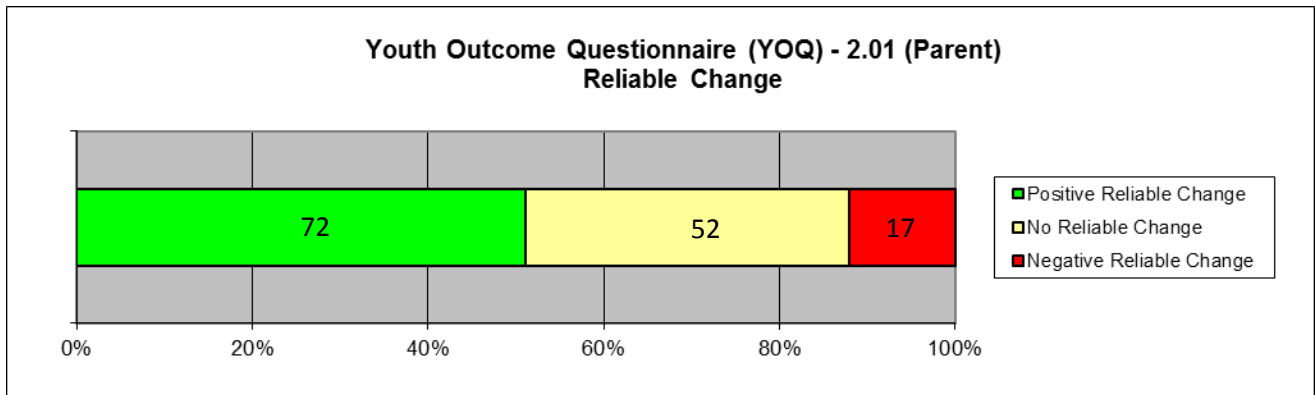
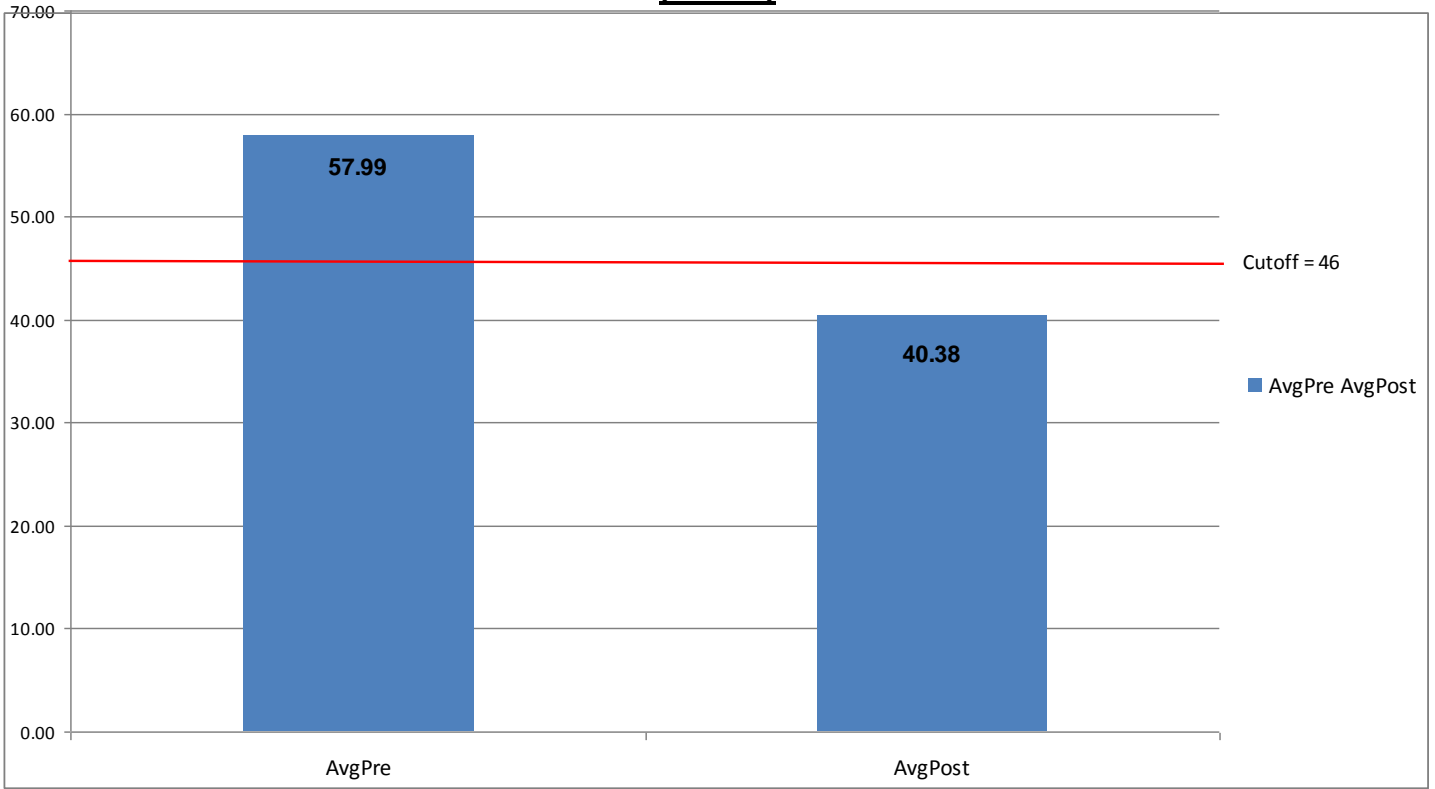
### UCLA PTSD RI – Child/Adolescent (n=247)



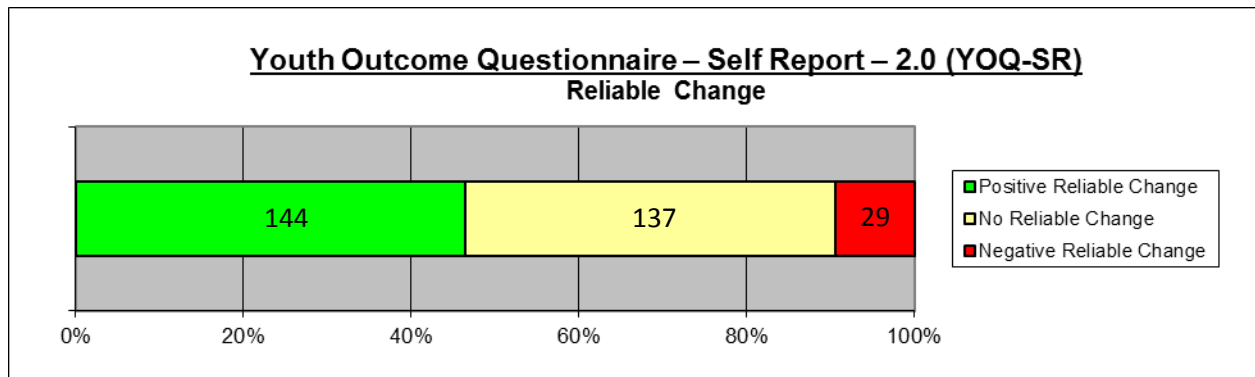
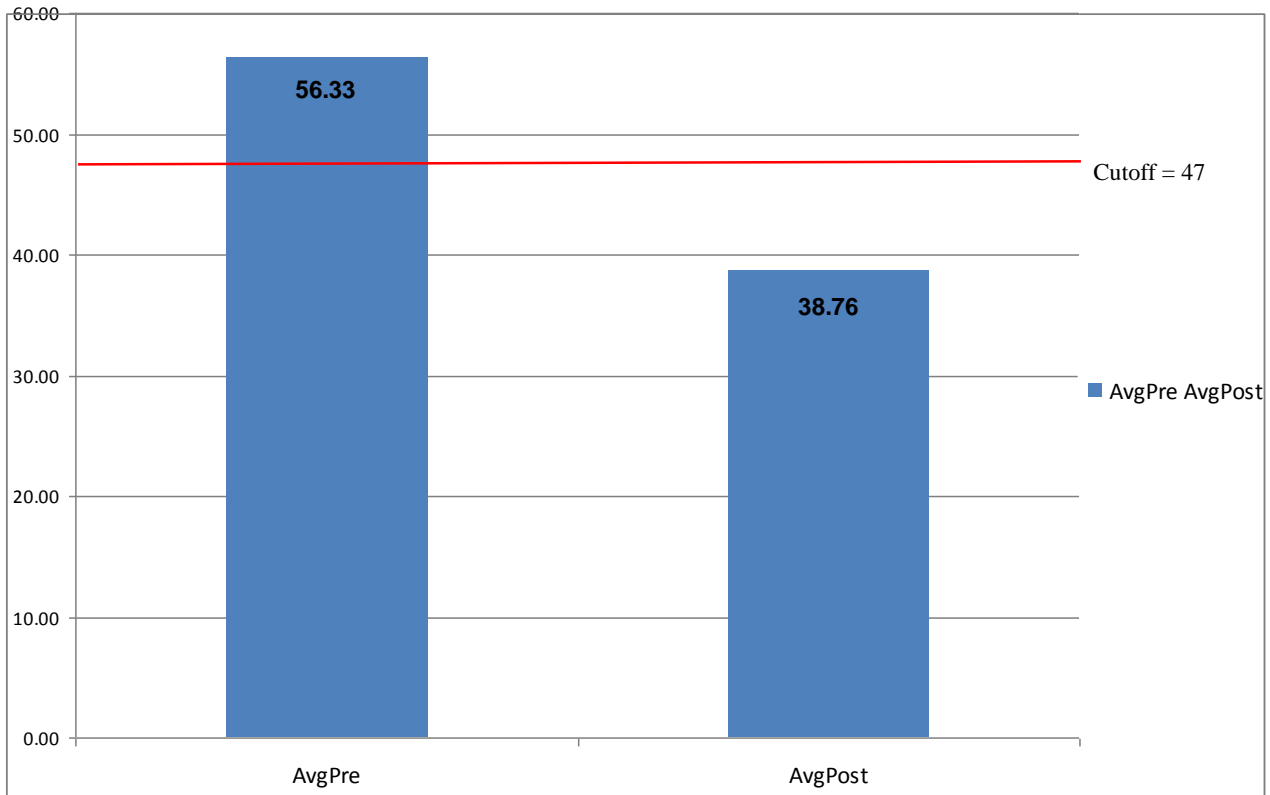
**UCLA PTSD-RI – Adult**  
**(n=64)**



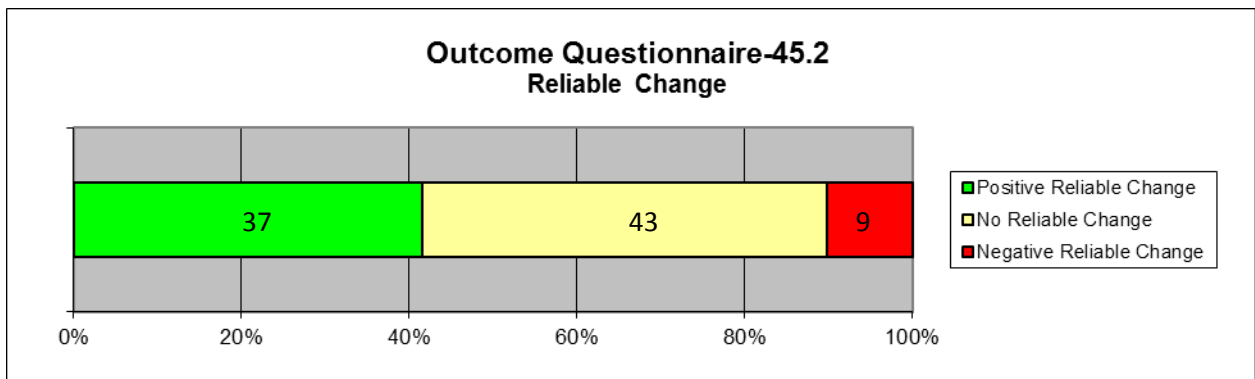
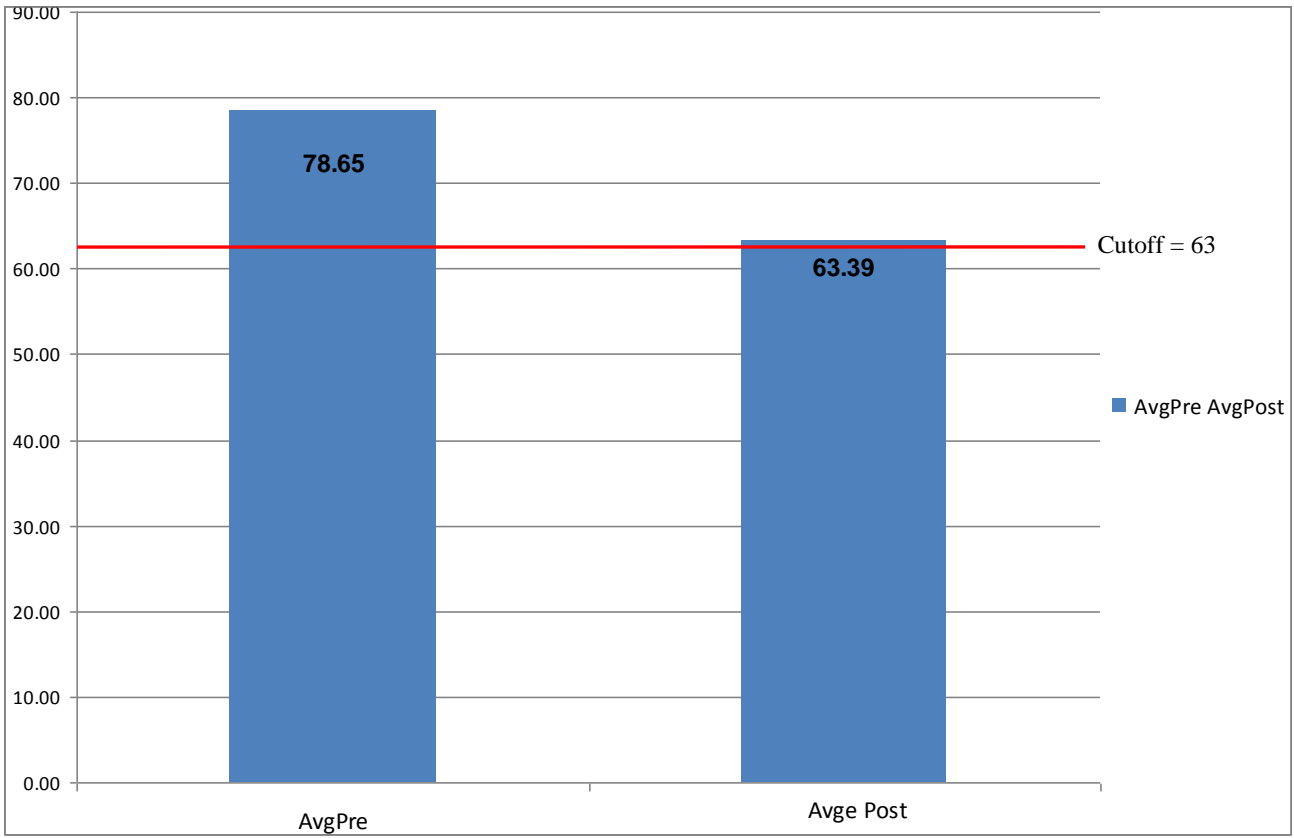
**Youth Outcome Questionnaire – (YOQ) – 2.01 (Parent)**  
**(N=141)**



**Youth Outcome Questionnaire – Self Report – 2.0 (YOQ-SR)**  
**(N=310)**



**Outcome Questionnaire-45.2**  
**(N=89)**



## Appendix

### Youth Outcomes Questionnaires (YOQ and YOQ-SR)

The Youth Outcome Questionnaire is a 64-item parent-report that assesses global distress in a child's/adolescent's life from 4-17 years of age. The YOQ-SR is the Self-report version of the YOQ and is completed by the child/adolescent. Total scores on both measures can range from -16 to 240. Total scores of 46 or higher are most similar to a clinical population on the YOQ. A total score of 47 is most similar to that of a clinical population on the YOQ-SR.

### Outcomes Questionnaires (OQ)

The Outcome Questionnaire is a 45-item self-report that assesses global distress in a client's life from ages 19 and older. Total Scores on this measure can range from 0 to 180, with scores of 63 or higher indicating clinical significance.

### Post-Traumatic Stress Disorder Reaction Index (PTSD-RI)

The UCLA Post-Traumatic Stress Disorder Reaction Index (PTSD-RI) is a brief (21 or 22-item measure depending on the version) that measures the frequency of occurrence of post-traumatic stress disorder symptoms during the month prior to the assessment. The Child/Adolescent Version is appropriate for clients age 6-20. The Parent Version is appropriate for clients age 3-18. The Adult Short-form is appropriate for clients age 21+.

Possible Total PTSD Severity Scores range from 0-68; and scores of 38 or higher have the greatest sensitivity and specificity for detecting PTSD.

### Reliable Change Index (RCI)

When comparing Pre and Post scores, it is very helpful to know whether the change reported represents the real effects of the treatment or errors in the system of measurement. The Reliability of Change Index (RCI) is a statistical way of helping to insure that the change recorded between pre and post assessments exceeds that which would be expected on the basis of measurement error alone. The RCI has been calculated using the Jacobson and Truax (1991) method and indicates when change exceeds that which would be expected on the basis of error at the  $p < .05$  probability level. For a more in-depth discussion of Reliability of Change see Jacobson, N. S., & Truax, P. (1991). Clinical Significance: A statistical approach to defining meaningful change in psychotherapy research. *Journal of Consulting and Clinical Psychology*, 59, 12-19. Also see Wise, E. A. (2004). Methods for analyzing psychotherapy outcomes: A review of clinical significance, reliable change, and recommendations for future directions. *Journal of Personality Assessment*, 82(1), 50-59.

The number and percent of clients experiencing positive change, no change and negative change are recorded in table 6. Healthful change in each of the measures cited here means that scores have decreased in value from pre to post test administrations (i.e. recorded a negative change on the RCI). To help avoid confusion, healthful reliable change is presented as positive while unhealthful reliable change is presented as negative change.

The Reliable Change analysis for the PTSD-RI Adult Short-Form used the same Cronbach Alpha score found in the other PTSD-RI versions.

### Supplemental Information for Table 3 “Other” Diagnosis Category

DSM-IV Primary Axis Diagnosis - Clients Who Entered SS	n	Percent
Dysthymic Disorder	353	6.58%
Major Depressive Disorder, Recurrent, Moderate	240	4.47%
Conduct Disorder, Adolescent-Onset Type	225	4.19%
Attention-Deficit/Hyperactivity Disorder, Combined Type or Hyperactive Impulse Type	225	4.19%
Major Depressive Disorder, Rec., Severe W/O Psychotic Features	201	3.75%
Anxiety Disorder NOS	139	2.59%
Generalized Anxiety Disorder	120	2.24%
Major Depressive Disorder, Single Episode, Moderate	109	2.03%
Bipolar Disorder NOS	108	2.01%
Major Depressive Disorder, Rec., Severe With Psychotic Features	104	1.94%
Adjustment Disorder With Anxiety and Depressed Mood	70	1.30%
Psychotic Disorder NOS	68	1.27%
Major Depressive Disorder, Recurrent, Unspecified	68	1.27%
Schizoaffective Disorder	64	1.19%
Adjustment Disorder With Depressed Mood	55	1.02%
Major Depressive Disorder, SE, Severe W/O Psychotic Features	53	0.99%
Attention-Deficit/Hyperactivity Disorder, Predominantly Inattentive Type	52	0.97%
Major Depressive Disorder, Recurrent, Mild	50	0.93%
Conduct Disorder, Childhood-Onset Type	49	0.91%
Major Depressive Disorder, Single Episode, Mild	49	0.91%
Adjustment Disorder W/Mixed Disturbance Emotion and Conduct	47	0.88%
Major Depressive Disorder, SE, Severe With Psychotic Features	46	0.86%
Major Depressive Disorder, Single Episode, Unspecified	44	0.82%
Schizophrenia, Paranoid Type	44	0.82%
Bipolar II Disorder	33	0.61%
Attention-Deficit/Hyperactivity Disorder NOS	29	0.54%
Adjustment Disorder Unspecified	22	0.41%
Panic Disorder Without Agoraphobia	22	0.41%
Bipolar I Disorder, MRE, Depressed, Severe W/O Psychotic Features	18	0.34%
Bipolar I Disorder, MRE, Depressed, Severe With Psychotic Features	17	0.32%
Bipolar I Disorder, MRE, Depressed, Unspecified	17	0.32%
Adjustment Disorder With Disturbance of Conduct	16	0.30%
Obsessive-Compulsive Disorder	15	0.28%
Adjustment Disorder With Anxiety	15	0.28%
Bipolar I Disorder, MRE, Mixed, Severe W/O Psychotic Features	14	0.26%
Bipolar I Disorder, MRE, Mixed, Unspecified	13	0.24%
Major Depressive Disorder, Recurrent, In Partial Remission	13	0.24%
Intermittent Explosive Disorder	13	0.24%
Conduct Disorder, Unspecified Onset	13	0.24%

<b>DSM-IV Primary Axis Diagnosis - Clients Who Entered SS</b>	<b>n</b>	<b>Percent</b>
Bipolar I Disorder, MRE, Mixed, Severe With Psychotic Features	12	0.22%
No Diagnosis (code invalid as Secondary/Axis III Diagnosis)	12	0.22%
Bipolar I Disorder, MRE, Mixed, Moderate	11	0.20%
Bipolar I Disorder, MRE, Depressed, Moderate	10	0.19%
Bipolar I Disorder, MRE, Hypomanic/Manic Unspecified	9	0.17%
Bipolar I Disorder, MRE, Manic, Severe With Psychotic Features	9	0.17%
Diagnosis Deferred (code invalid as Secondary/Axis II Diagnosis)	8	0.15%
Reactive Attachment Disorder of Infancy or Early Childhood	8	0.15%
Bipolar I Disorder, MRE, Unspecified	7	0.13%
Bipolar I Disorder, MRE, Manic, Moderate	7	0.13%
Panic Disorder With Agoraphobia	7	0.13%
Schizophrenia, Disorganized Type	6	0.11%
Bipolar I Disorder, MRE, Manic, Severe W/O Psychotic Features	6	0.11%
Schizophrenia, Undifferentiated Type	6	0.11%
Mood Disorder Due to ...(Indicate Medical Condition)	5	0.09%
Major Depressive Disorder, Single Episode, In Partial Remission	5	0.09%
Social Phobia	5	0.09%
Acute Stress Disorder	5	0.09%
Pervasive Developmental Disorder NOS/Asperger's Disorder/Rett's Disorder	4	0.07%
Cyclothymic Disorder	4	0.07%
Impulse-Control Disorder NOS	4	0.07%
Bipolar I Disorder, MRE, Depressed, Mild	3	0.06%
Major Depressive Disorder, Recurrent, In Full Remission	3	0.06%
Gender Identity Disorder in Adolescents or Adults	3	0.06%
Drug Induced Psychotic Disorder, With Delusions	3	0.06%
Drug Induced Mood Disorder	3	0.06%
Disorder of Infancy, Childhood, or Adolescence NOS	3	0.06%
Bipolar I Disorder, MRE, Depressed, In Partial Remission	3	0.06%
Bipolar I Disorder, Single Manic Episode, Unspecified	3	0.06%
Bereavement	3	0.06%
Separation Anxiety Disorder	2	0.04%
Bipolar I Disorder, MRE, Mixed, Mild	2	0.04%
Cannabis Abuse	2	0.04%
Eating Disorder NOS	2	0.04%
Delusional Disorder	2	0.04%
Drug Induced Delirium	1	0.02%
Drug Induced Disorder NEC	1	0.02%
Drug Related Disorder NOS	1	0.02%
Schizophreniform Disorder	1	0.02%
Bipolar I Disorder, MRE Manic, In Full Remission	1	0.02%



<b>DSM-IV Primary Axis Diagnosis - Clients Who Entered SS</b>	<b>n</b>	<b>Percent</b>
Unspecified Mental Disorder (Nonpsychotic)	1	0.02%
Dyspareunia (Not Due to a Medical Condition)	1	0.02%
Bipolar I Disorder, Single Manic Episode, Moderate	1	0.02%
Psychotic Disorder Due to ...(Indicate Medical Condition) with Delusions	1	0.02%
Anxiety Disorder Due to General Medical Condition	1	0.02%
Religious or Spiritual Problem/Phase of Life Problem	1	0.02%
Polysubstance Dependence	1	0.02%
Brief Psychotic Disorder	1	0.02%
Pain Disorder Associated w/Psychological and Medical	1	0.02%
Drug Induced Psychotic Disorder, With Hallucinations	1	0.02%
Bipolar I, SME, Severe W/O Psychotic Features	1	0.02%
Somatoform Disorder NOS and Undifferentiated Somatoform Disorder	1	0.02%
Bulimia Nervosa	1	0.02%
Total Other	3058	56.99%